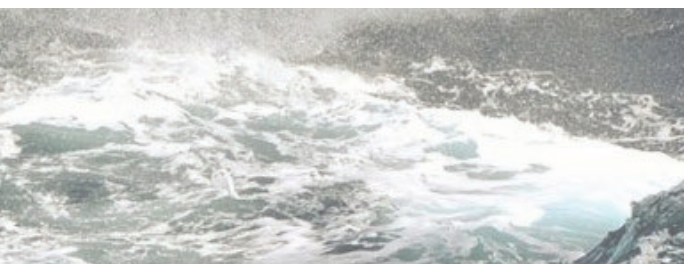


# What is a Pleasure Craft Safety Check?

- An educational boating safety program from RCMSAR.
- Our Checkers are NOT enforcement officers.
- Safety checks are made by INVITATION ONLY.
- Participation by the pleasure craft owner is entirely voluntary.
- Includes a review of the pleasure craft's onboard equipment, at the owner's convenience.
- Leverages local area knowledge.
- Promotes Safe Boating awareness.



## Contact Us At:

RCM-SAR Station 29 - Ladysmith

Email: [rcmsar29.com/contact](mailto:rcmsar29.com/contact)

Phone #: \_\_\_\_\_

Member: \_\_\_\_\_

# Who is the RCMSAR?

The Royal Canadian Marine Search and Rescue (RCMSAR) is a charitable organization whose volunteers provide marine SAR response 24 hours a day, 365 days a year. Ready to respond to marine emergencies at a moment's notice, more than 900 volunteers from many backgrounds dedicate thousands of hours to training, conducting SAR missions and providing boating safety information to B.C.'s communities.

RCMSAR volunteers are highly trained and equipped with specialized gear and rescue vessels designed for the marine challenges of the West Coast RCMSAR's area of operations include more than 24,000 km of rugged coastline and covers 450,000 square kilometres of internal and offshore waters.

While it is challenging to provide search and rescue response to such a large area, our volunteers meet the challenge with determination and professionalism to save lives on the water.



**ROYAL CANADIAN MARINE  
SEARCH & RESCUE**

*Saving Lives on the Water*

## Pleasure Craft Safety Checks

Our marine search and rescue crews will be available to local boaters at docks, marinas, and boat launch ramps this boating season.

They will be offering voluntary and free safety checks to the boating public.

Download the  
Safe Boating Guide



# Minimum Safety Equipment Requirements

	Personal Watercraft	Sail and Power Boats up to 6 m
Personal Life Saving Appliances	<ol style="list-style-type: none"> <li>One Lifejacket/PFD per person on board</li> <li>One Reboarding Device</li> <li>One Buoyant heaving line at least 15 m long</li> </ol>	<ol style="list-style-type: none"> <li>One Lifejacket/PFD per person on board</li> <li>One Reboarding Device</li> <li>One Buoyant heaving line at least 15m long</li> </ol>
Visual Signals	<ol style="list-style-type: none"> <li>One watertight flashlight or three flares of Type A, B, C, or D (only 1 can be type D).</li> </ol>	<ol style="list-style-type: none"> <li>One watertight flashlight or three flares of Type A, B, C, or D (only one can be type D).</li> </ol>
Vessel Safety Equipment	<ol style="list-style-type: none"> <li>One manual propelling device or one anchor and a t least 15 m of cable, rope, or chain in any combination</li> <li>One bailer or manual bilge pump</li> </ol>	<ol style="list-style-type: none"> <li>One manual propelling device or one anchor and a t least 15 m of cable, rope, or chain in any combination</li> <li>One bailer or manual bilge pump</li> </ol>
Navigation Equipment	<ol style="list-style-type: none"> <li>One sound-signalling device or appliance</li> <li>Navigation lights</li> <li>One magnetic compass</li> <li>One radar reflector</li> </ol>	<ol style="list-style-type: none"> <li>One sound-signalling device or appliance</li> <li>Navigation lights</li> <li>One magnetic compass</li> <li>One radar reflector</li> </ol>
Fire Fighting Equipment	<ol style="list-style-type: none"> <li>One 5BC fire extinguisher</li> </ol>	<ol style="list-style-type: none"> <li>One 5BC fire extinguisher if equipped with an inboard engine, a fixed fuel tank of any size, or a fuel-burning cooking, heating, or refrigerating appliance</li> </ol>

	Sail and Power Boats 6 m - 9 m	Sail & Power Boats 9 m-12 m
Personal Life Saving Appliances	<ol style="list-style-type: none"> <li>One Lifejacket/PFD per person on board</li> <li>One Reboarding Device</li> <li>One Buoyant heaving line at least 15 m long or one lifebuoy attached to a buoyant line at least 15 m long</li> </ol>	<ol style="list-style-type: none"> <li>One Lifejacket/PFD per person on board</li> <li>One Reboarding Device</li> <li>One Buoyant heaving line at least 15m long</li> <li>One lifebuoy attached to a buoyant line at least 15 m long</li> </ol>
Visual Signals	<ol style="list-style-type: none"> <li>One watertight flashlight</li> <li>Six flares of Type A, B, C, or D (only two can be type D).</li> </ol>	<ol style="list-style-type: none"> <li>One watertight flashlight</li> <li>Twelve flares of Type A, B, C, or D (only six can be type D).</li> </ol>
Vessel Safety Equipment	<ol style="list-style-type: none"> <li>One manual propelling device or one anchor and a t least 15 m of cable, rope, or chain in any combination</li> <li>One bailer or manual bilge pump</li> </ol>	<ol style="list-style-type: none"> <li>One anchor and at least 30 m of cable, rope, or chain in any combination</li> <li>One manual bilge pump or bilge-pumping arrangements</li> </ol>
Navigation Equipment	<ol style="list-style-type: none"> <li>One sound-signalling device or appliance</li> <li>Navigation lights</li> <li>One magnetic compass</li> <li>One radar reflector</li> </ol>	<ol style="list-style-type: none"> <li>One sound-signalling device or appliance</li> <li>Navigation lights</li> <li>One magnetic compass</li> <li>One radar reflector</li> </ol>
Fire Fighting Equipment	<ol style="list-style-type: none"> <li>One 5BC fire extinguisher if equipped with a motor</li> <li>One 5BC fire extinguisher if equipped with a fuel-burning cooking, heating, or refrigerating appliance</li> </ol>	<ol style="list-style-type: none"> <li>One 10BC fire extinguisher if equipped with a motor</li> <li>One 10BC fire extinguisher if equipped with a fuel burning cooking, heating, or refrigerating appliance</li> </ol>

	Sail & Power Boats 12 m-24 m
Personal Life Saving Appliances	<ol style="list-style-type: none"> <li>One Lifejacket/PFD per person on board</li> <li>One Reboarding Device</li> <li>One Buoyant heaving line at least 15m long</li> <li>One lifebuoy equipped with a self-igniting light or attached to a buoyant line at least 15 m</li> </ol>
Visual Signals	<ol style="list-style-type: none"> <li>One watertight flashlight</li> <li>Twelve flares of Type A, B, C, or D (only six can be type D).</li> </ol>
Vessel Safety Equipment	<ol style="list-style-type: none"> <li>One anchor and at least 50 m of cable, rope, or chain in any combination</li> <li>Bilge-pumping arrangements</li> </ol>
Navigation Equipment	<ol style="list-style-type: none"> <li>One sound-signalling device or appliance. Two required if the boat is 20 m and over that meets the applicable standards set out in the Collision Regulations</li> <li>Navigation lights</li> <li>One magnetic compass that meets the requirements set out in the Navigation Safety Regulations</li> <li>One radar reflector</li> </ol>
Fire Fighting Equipment	<ol style="list-style-type: none"> <li>One 10BC fire extinguisher at all of the following locations: <ul style="list-style-type: none"> <li>At each access to any space where a fuel-burning cooking, heating, or refrigerating appliance is fitted</li> <li>at the entrance to any accomodation space</li> <li>at the entrance to the machinery space</li> </ul> </li> <li>One axe</li> <li>Two buckets of at least 10 L each</li> </ol>